



OSSIDI



BIANCO



Rombo Glossy

7" x 13"

MC.OS.BIA.0713ROM.GL



Rombo Matte

7" x 13"

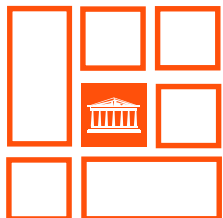
MC.OS.BIA.0713ROM.MT



Matte

8" x 8"

MC.OS.BIA.0808.MT



Items shown above are part of our stocking program.

For special order items, please contact your sales representative.



CELESTE



Rombo Glossy

7" x 13"

MC.OS.CTE.0713ROM.GL



Rombo Matte

7" x 13"

MC.OS.CTE.0713ROM.MT

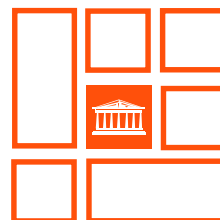


Matte

8" x 8"

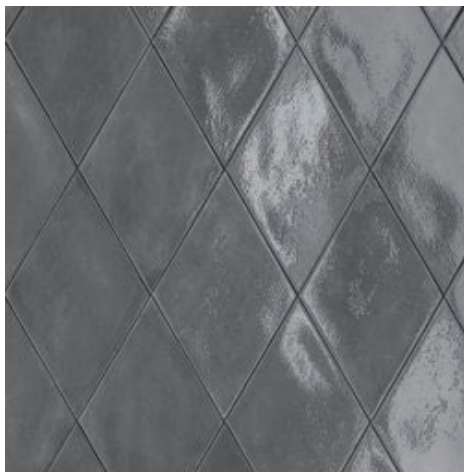
MC.OS.CTE.0808.MT

Items shown above are part of our stocking program.
For special order items, please contact your sales representative.





GRIGIO



Rombo Glossy

7" x 13"

MC.OS.GRG.0713ROM.GL



Rombo Matte

7" x 13"

MC.OS.GRG.0713ROM.MT

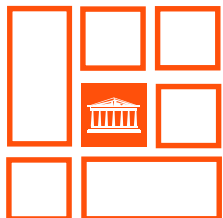


Matte

8" x 8"

MC.OS.GRG.0808.MT

Items shown above are part of our stocking program.
For special order items, please contact your sales representative.





NERO



Rombo Glossy

7" x 13"

MC.OS.NRO.0713ROM.GL



Rombo Matte

7" x 13"

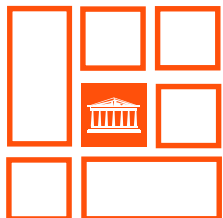
MC.OS.NRO.0713ROM.MT



Matte

8" x 8"

MC.OS.NRO.0808.MT



Items shown above are part of our stocking program.

For special order items, please contact your sales representative.

◇ MODULO A



◇ 100%



◇ 50% ◇ 50%



◇ 25% ◇ 25% ◇ 50%

◇ MODULO B



◇ 100%



◇ 33,3% ◇ 33,3% ◇ 33,3%



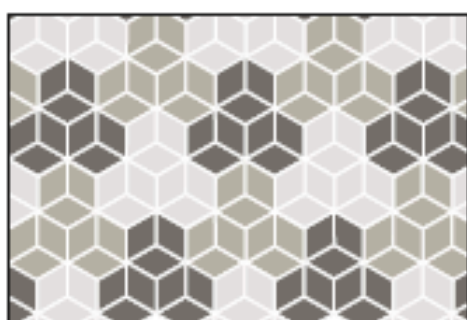
◇ 45% ◇ 32% ◇ 23%



◇ 33,3% ◇ 33,3% ◇ 33,3%



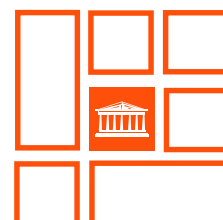
◇ 33,3% ◇ 33,3% ◇ 33,3%



◇ 33,3% ◇ 33,3% ◇ 33,3%



◇ 10% ◇ 45% ◇ 45%





MODULO C



◇ 100%



◇ 33,3% ◇ 33,3% ◇ 33,3%



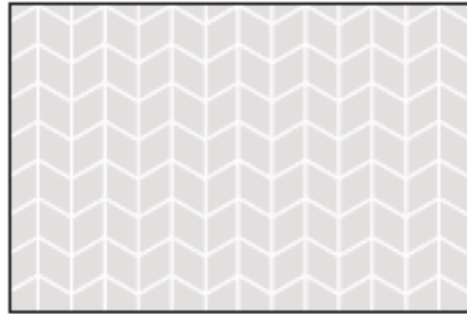
◇ 33,3% ◇ 33,3% ◇ 33,3%



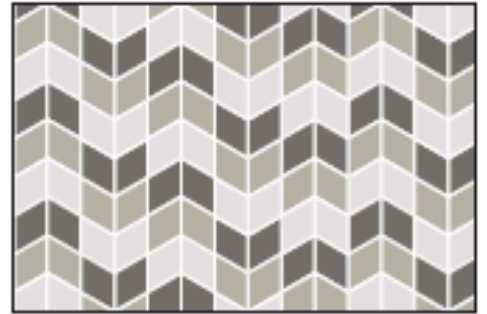
◇ 33,3% ◇ 33,3% ◇ 33,3%



MODULO D



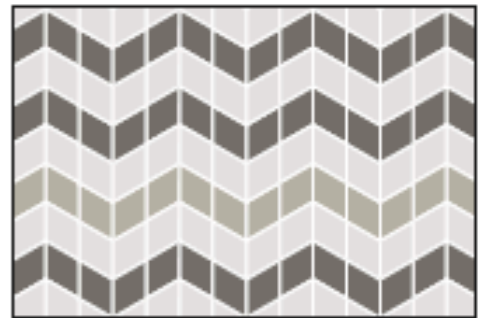
◇ 100%



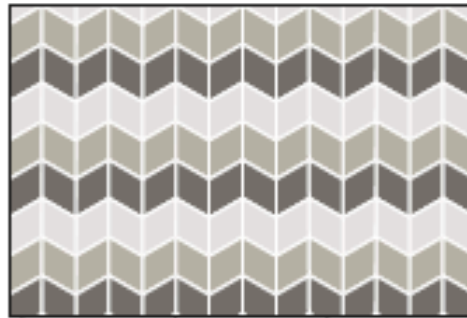
◇ 33,3% ◇ 33,3% ◇ 33,3%



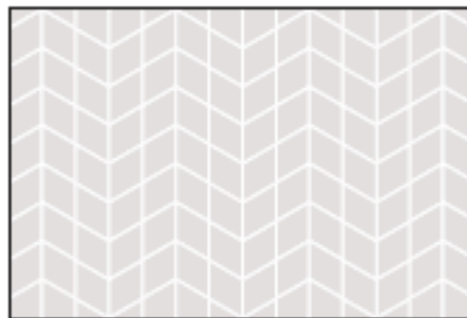
◇ 50% ◇ 50%



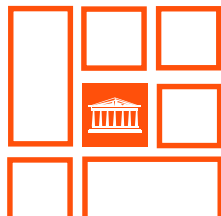
◇ 50% ◇ 17% ◇ 33%



◇ 33,3% ◇ 33,3% ◇ 33,3%



◇ 100%



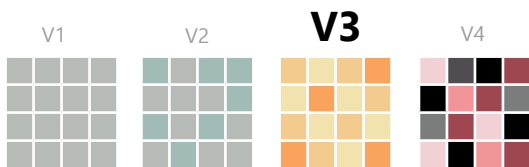
OSSIDI SERIES

Tests Performed -- Results Conform

Test	Standard Used	Min. Requirements	Results
Water Absorption	ISO 10545-3	< 0.5%	Conforms
Dynamic C.O.F. (Matte)	ANSI A137.1-2012	≥ 0.42	Conforms
Bending / Breaking Strength	ISO 10545-4	> 1300N	Conforms
Slip Resistance (Matte)	DIN 51130	R-9	Conforms
Chemical Resistance	ISO 10545-13	min. UB	Conforms
Frost Resistance	ISO 10545-12	Required	Conforms
Stain Resistance	ASTM-C-1378	Resistant	Conforms

Technical data is supplied by the manufacturer and is subject to change at any time. Olympia does not provide warranties as to the specifications of any product.

Colour Variation



Member



Member of Canada Green Building Council



Member of U.S. Green Building Council



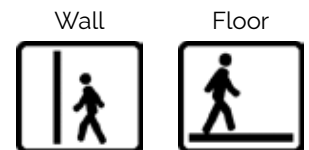
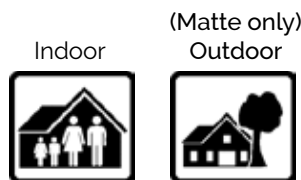
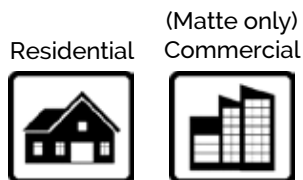
Ceramic Tile Distributors of America (CTDA)



Marble Institute of America

For information concerning LEED, please contact our Sales Representative

Examples of Recommended Applications



Packing Details

TILE SIZE	PC/BOX	SF/BOX	LB/BOX	BOX/PAL
Rombo Glossy & Matte	29	9.47	36.16	48
8" x 8" Matte	30	12.92	52.69	56

PRODUCT	WALL APPLICATION		FLOOR APPLICATION	
	Interior	Exterior	Interior	Exterior
TILE BOND COAT	<ul style="list-style-type: none"> • 56SR LHT Mortar • 66 FlexLite 	<ul style="list-style-type: none"> • 5400 Maxi-Flex • 51/44 Latex Mortar System 	<ul style="list-style-type: none"> • 56SR LHT Mortar • 5400 Maxi-Flex 	<ul style="list-style-type: none"> • 5400 Maxi-Flex • 51/44 Latex Mortar System
GROUT	<ul style="list-style-type: none"> • 500 PM Unsanded • 600 PM Sanded • ColourMax Plus Quartz 	<ul style="list-style-type: none"> • 600 PM Sanded • 1600 RSG PM Sanded 	<ul style="list-style-type: none"> • 600 PM Sanded • FlexEpoxy 100 Epoxy 	<ul style="list-style-type: none"> • 600 PM Sanded • 1600 RSG Fast Set
CAULKING	Ultra Performance (colour-matched to grout)	Ultra Performance (colour-matched to grout)	Ultra Performance (colour-matched to grout)	Ultra Performance (colour-matched to grout)

SURFACE PREPARATION (If Required)

- Floor levelling: 59 Flex Flo / 5900 Flex Flo Plus Self Levelling Underlayment
- Waterproofing: WP900 Waterproof Membrane
- Crack Isolation/Uncoupling: Flexilastic 1000 Crack Isolation Membrane / FlexMat Uncoupling Membrane

*For a complete listing of FLEX TILE products and accessories including Sound Control, In-Floor Heating, and further setting options, please visit www.flextile.net



“MORE” Surface Care Product Guide

Task	Product Recommendation	Dilution with Water	Frequency
Grout Sealing	MORE™ Grout, Ceramic & Porcelain Sealer	Ready to use	Commercial: 1-3 Years Residential: 5-8 Years
Daily Maintenance	MORE™ Stone and Tile Cleaner	1 : 128 Ratio	Daily
Deep Cleaning	MORE™ Alkaline Cleaner	1 : 4 Ratio	As Needed
Grout Haze- Cementitious	MORE™ Acidic Cleaner	1 : 4 Ratio	As Needed
Grout Haze - Epoxy / Urethane	MORE™ Coating Stripper*	Ready to use	As Needed

* Always test in an inconspicuous area to make sure the product is achieving the desired results and is not damaging the finish of the surface.

OSSIDI SERIES: FL- / MEF-



Colour may vary slightly from images shown. It is highly recommended to view physical samples of tile prior to purchase. Note that shade variations between tiles is characteristic and adds to the inherent beauty of the product. Please visit a showroom near you or request a sample from your Olympia Tile Sales Representative.

It is Olympia Tile's policy to stock all items for sale. Should you require additional sizes, finishes or colours, Olympia has a Special Order Department to help find exactly what you are looking for. Please contact your Olympia Tile Sales Representative for more details. Note that minimum order quantities and longer lead times apply to all special order items.

OLYMPIA TILE + STONE INTERNATIONAL INC.

CORPORATE OFFICE AND SHOWROOM TORONTO 1000 Lawrence Ave. West Ontario M6A 1C6 T: 416 785 6666 Toll Free: 1 800 268 1613 F: 416 785 9682	VANCOUVER 2350 Willingdon Ave. Burnaby British Columbia V5C 5J6 T: 604 294 2244 Toll Free: 1 800 663 9441 F: 604 294 0528	EDMONTON 11540 - 163rd Street Alberta T5M 3T3 T: 780 452 5050 Toll Free: 1 800 619 4438 F: 780 451 4391	WINDSOR 4145 7th Concession Rd Ontario N9A 6J3 T: 519 966 2500 Toll Free: 1 877 410 5953 F: 519 969 2407	HAMILTON 75 Milburn Road Ontario L8E 3A3 T: 905 560 5520 Toll Free: 1 800 263 1370 F: 905 578 3593	MONTREAL 555 rue Locke Ville St-Laurent, Quebec H4T 1X7 T: 514 345 8666 Toll Free: 1 800 361 1954 F: 514 345 8825	HALIFAX 55 Akerley Boulevard Dartmouth, Nova Scotia B3B 1M3 T: 902 468 9260 Toll Free: 1 800 565 7790 F: 902 468 0011
VAUGHAN 100A Royal Group Crescent Ontario L4H 1X9 T: 905 266 0420 F: 905 266 0423	CALGARY 3308 - 11th Street S.E. Alberta T2G 3G8 T: 403 287 1070 Toll Free: 1 800 322 8182 F: 403 243 1888	WINNIPEG 560 Sheppard Street Manitoba R2X 2P8 T: 204 633 5736 Toll Free: 1 800 665 8017 F: 204 632 4644	LONDON 234 Exeter Road Ontario N6L 1A3 T: 519 652 5011 Toll Free: 1 800 265 4690 F: 519 652 5021	OTTAWA 2480 Don Reid Drive Ontario K1H 1E1 T: 613 736 9570 Toll Free: 1 800 267 1864 F: 613 736 9563	QUEBEC 2405 rue Watt Quebec G1P 3X2 T: 418 657 5557 Toll Free: 1 800 463 5516 F: 418 657 6708	

SLAB DIVISION

TORONTO

22 Dufflaw Road | Toronto | Ontario | M6A 2W1
 T: 416 785 9555 ext 320 | F: 416 781 4521

VAUGHAN

100A Royal Group Crescent | Vaughan | Ontario | L4H 1X9
 T: 905 266 0420 | F: 905 266 0423

OLYMPIA TILE (USA), INC.

CORPORATE OFFICE 701 Berkshire Lane North Minneapolis (Plymouth) Minnesota 55441 T: 763 545 5455 F: 763 542 9830	IOWA KATE-LO TILE & STONE 4251 N.W. Urbandale Dr. Des Moines (Urbandale) Iowa 50322 T: 515 270 4920 Toll Free: 1 800 320 1387 F: 515 270 7035	2780 Enterprise Ct. Saginaw, Michigan 48603 T: 989 790 5851 Toll Free: 1 800 797 0897 F: 989 790 0311	3201 West County Rd. 42 Suite 110 Burnsville, Minnesota 55306 T: 952 890 4324 Toll Free: 1 800 288 3026 F: 952 890 4402	NEW JERSEY NEW JERSEY TILE & STONE 70 Newfield Avenue Raritan Center, Edison New Jersey 08837 T: 732 512 1818 Toll Free: 1 800 513 8453 F: 732 512 1881	OREGON THOMPSON TILE & STONE 4472 NW Yeon Avenue Portland Oregon 97210 T: 971 803 7552 Toll Free: 1 800 827 4092 F: 503 222 0731	711 S. Fidalgo Street Seattle Washington 98108 T: 206 900 7331 Toll Free: 1 800 827 4093 F: 206 294 5933
FLORIDA ALPHA TILE & STONE 2443 East Meadow Blvd. Tampa, Florida 33619 T: 813 620 9000 Toll Free: 1 800 785 9000 F: 813 621 0606	NORTH DAKOTA KATE-LO TILE & STONE Resource Centre 300 Northern Pacific Ave. Suite 106 Fargo, North Dakota 58102 T: 701 478 8087 F: 701 478 8084	13085 23 Mile Rd. Detroit East (Shelby Township) Michigan 48315 T: 586 991 0780 Toll Free: 1 800 889 5395 F: 586 991 0784	1911 West County Rd. 'C' St. Paul (Roseville) Minnesota 55113 T: 651 730 1975 Toll Free: 1 800 288 3026 F: 651 730 2013	NEW YORK DOBKIN TILE & STONE 51 Bembro Drive Buffalo (Cheektowaga) New York 14225 T: 716 684 1200 Toll Free: 1 800 759 1414 F: 716 684 1294	WISCONSIN LEXCO TILE & STONE 1616 S. 108th Street Milwaukee Wisconsin 53214 T: 414 771 2900 Toll Free: 1 800-242-2249 F: 414 771 9153	575 Strander Blvd. Tukwila Washington 98188 T: 206 900 7331
2603 Ace Road Orlando, Florida 32804 T: 407 293 3993 Toll Free: 1 800 785 3993 F: 407 293 1779	MICHIGAN BEAVER TILE & STONE 24700 Drake Rd. Detroit West (Farmington Hills) Michigan 48335 T: 248 476 2333 Toll Free: 1 800 825 0551 F: 248 476 4636	1694 Gezon Parkway Grand Rapids, (Wyoming) Michigan 49509 T: 616 534 2883 Toll Free: 1 800 797 0727 F: 616 534 4784	171 Cheshire Lane N Suite 100 Plymouth Minnesota 55441 T: 763 450 3636 F: 763 450 3637	48 Railroad Avenue Albany (Colonie) New York 12205 T: 518 489 6803 Toll Free: 1 800 678 5769 F: 518 489 6806	WASHINGTON THOMPSON TILE & STONE 3900 East Alki Spokane Washington 99208 T: 509 535 2925 Toll Free: 1 800 827 2555 F: 509 534 5218	
1808 Whitfield Ave. Sarasota, Florida 34243 T: 941 727 7433 Toll Free: 1 800 785 3484 F: 941 727 7381	1700 Stutz Dr., Suite 101 Detroit North (Troy) Michigan 48084 T: 248 649 5552 F: 248 649 0741	MINNESOTA KATE-LO TILE & STONE 701 Berkshire Lane North Minneapolis (Plymouth) Minnesota 55441 T: 763 545 5455 Toll Free: 1 800 288 3026 F: 763 542 9830	NEBRASKA KATE-LO TILE & STONE 13211 Chandler Road Suite 400 Omaha (La Vista) Nebraska 68138 T: 402 614 9010 Toll Free: 1 877 687 6636 F: 402 614 0989			

FLEXITILE LTD.
MANUFACTURING PLANTS
www.flextile.net

TORONTO
 121 30th Street | Toronto
 Ontario | M8W 3C1
 T: 416 255-1111 | Toll Free: 1 800 699 3623
 F: 416 255-1729

MONTREAL
 555 rue Locke | Ville St-Laurent
 Quebec | H4T 1X7
 T: 514 788-3120 | Toll Free: 1 800 361 1954
 F: 514 345-8825

VANCOUVER
 2829 Lake City Way | Burnaby
 British Columbia | V5A 2Z6
 T: 604 420-4914 | Toll Free: 1 888 236 4486
 F: 604 420-0936

